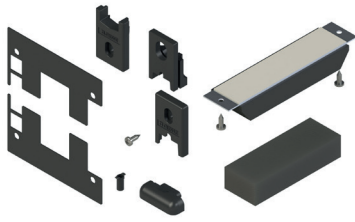


## GS3000 MACHINING COVER CAPS



### Functions

Machining cover caps for GS3000 lift and slide system.

Online data sheet



### Technical features

The machining cover caps kit contains all the components required to complete a two-sash lift and slide casement:

- top dust-proof plug and lower central sponge to fit in frame, in correspondence with the central labyrinth, to restrict the circulation of dust and passage of air
- top and bottom cover caps to conceal machinings on sash central upright
- lower sealing buffers to increase seal on track
- drainage cap, to fit to the frame lower cross-beam for fast drainage of water from the frame groove to outside the room
- sealing plates to seal the joint between stile and cross-beam in frames with 90° cut
- drainage tubes to position on frame lower cross-beam

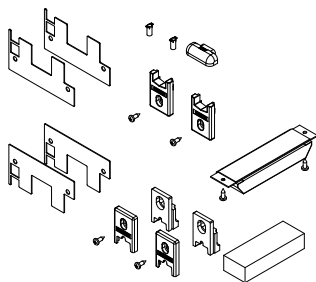
### Materials

Top dust-proof plug composed of plastic body with sponge  
Central lower sponge in expanded rubber  
Stainless steel screws  
Machining cover caps and anti-lifting plugs in fibreglass-reinforced polyamide  
Lower sealing buffers in rubber  
Cap and drainage tubes in fibreglass-reinforced polyamide  
Sealing plates in adhesive rubber  
Rubber dampers

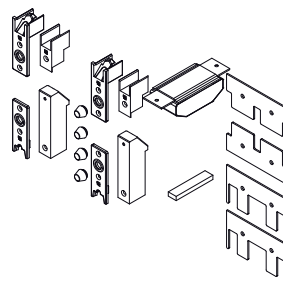
A central and anti-lifting plugs kit is also available, composed of:

- top dust-proof plug and lower central sponge to fit in frame, in correspondence with the central labyrinth, to restrict the circulation of dust and passage of air
- top and bottom machining cover caps equipped with buffers to absorb closing impact between sash and frame
- anti-lifting plug to be fitted in frame top corner. Designed to prevent sash from being removed simply by lifting it from bottom track
- anti-lifting shims to fit in correspondence with sash side stile

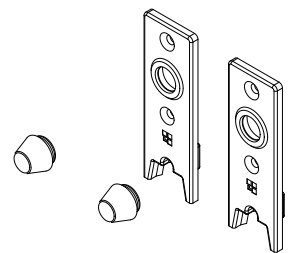
Machining cover kit for 2-sash lift and slide casement



Machining cover and anti-lifting kit

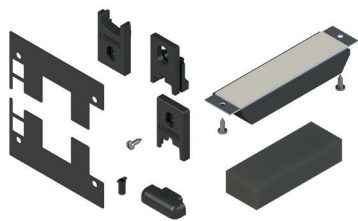


Lower machining cover caps



Item code	Description	Note	Base Raw	Anodised Elox	Painted	Trend/Gold Brass	Pieces per pack
07164	MACHINING COVER CAPS KIT GS3000		X				5
07967	MACHINING COVER CAPS KIT GS3000		X				5
0797701	CENTRAL ANTI-LIFTING PLUGS KIT -GS3000		X				5
07978	CENTRAL ANTI-LIFTING PLUGS KIT -GS3000		X				5

GS3000 MACHINING COVER CAPS



**Functions**  
Machining cover caps for GS3000 lift and slide system.

[Online data sheet](#)

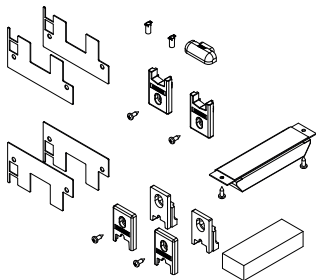


- Technical features**
- The machining cover caps kit contains all the components required to complete a two-sash lift and slide casement:
- top dust-proof plug and lower central sponge to fit in frame, in correspondence with the central labyrinth, to restrict the circulation of dust and passage of air
  - top and bottom cover caps to conceal machinings on sash central upright
  - lower sealing buffers to increase seal on track
  - drainage cap, to fit to the frame lower cross-beam for fast drainage of water from the frame groove to outside the room
  - sealing plates to seal the joint between stile and cross-beam in frames with 90° cut
  - drainage tubes to position on frame lower cross-beam

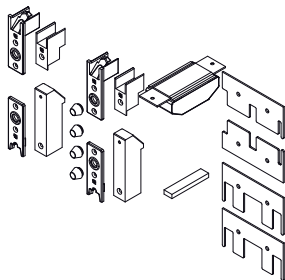
- Materials**
- Top dust-proof plug composed of plastic body with sponge
  - Central lower sponge in expanded rubber
  - Stainless steel screws
  - Machining cover caps and anti-lifting plugs in fibreglass-reinforced polyamide
  - Lower sealing buffers in rubber
  - Cap and drainage tubes in fibreglass-reinforced polyamide
  - Sealing plates in adhesive rubber
  - Rubber dampers

- A central and anti-lifting plugs kit is also available, composed of:
- top dust-proof plug and lower central sponge to fit in frame, in correspondence with the central labyrinth, to restrict the circulation of dust and passage of air
  - top and bottom machining cover caps equipped with buffers to absorb closing impact between sash and frame
  - anti-lifting plug to be fitted in frame top corner. Designed to prevent sash from being removed simply by lifting it from bottom track
  - anti-lifting shims to fit in correspondence with sash side stile

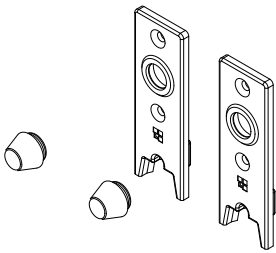
Machining cover kit for 2-sash lift and slide casement



Machining cover and anti-lifting kit



Lower machining cover caps



Item code	Description	Note	Base Raw	Anodised Elox	Painted	Trend/Gold Brass	Pieces per pack
07164	MACHINING COVER CAPS KIT GS3000		X				5
07967	MACHINING COVER CAPS KIT GS3000		X				5
0797701	CENTRAL ANTI-LIFTING PLUGS KIT -GS3000		X				5
07978	CENTRAL ANTI-LIFTING PLUGS KIT -GS3000		X				5