



RECESSED WINDOW HANDLE

Functions

Window handle that is applied on the secondary sash of a sliding casement.

Online data sheet



Technical Features

Not being top-hung, it allows overlapping the sashes.

Equipped with a 7 mm square pin and a positioner for stopping the handle at 0° and 180°.

The product has its own system for fixing to the stand-alone profile compared to the M5x25 screws fastening the window handle to the internal mechanism. Depending on the shape of the sash profile, the manufacturer will decide on how to prepare the recessed window handle with parts A or B so that the product is anchored in an effective and long-lasting manner.

Materials

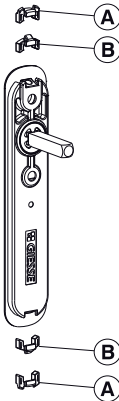
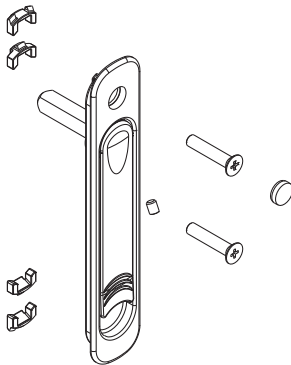
External body, pull handle and fixing components made of die-cast zamak

Square pin and fixing screws in zinc plated steel

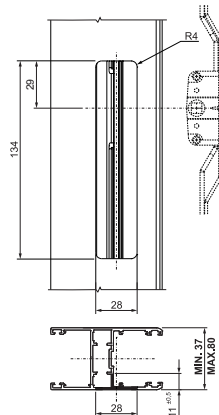
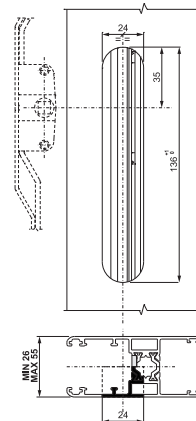
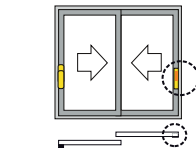
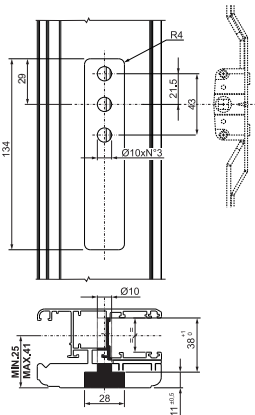
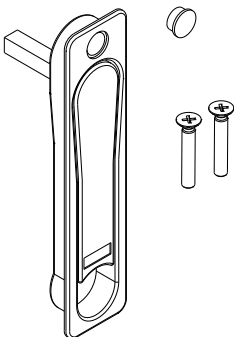
Hostaform snap disk

Locking washer made of harmonic steel

art. 02760



art. 02761



Item code	Description	Applicable	Notes	Base Raw	Anodised Elox	Painted	Trend/Gold Brass	Pieces per pack
02760	RECESSED WINDOW HANDLE	internal		X		X	X	8
02761	RECESSED WINDOW HANDLE	internal	Alu/wood or Alu profiles > 37 mm	X		X	X	8